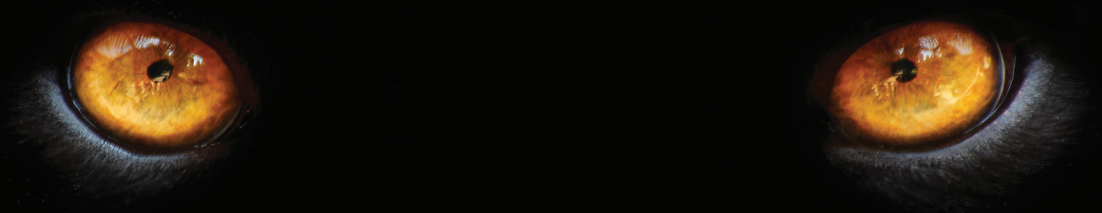


TIMKEN BELTS



PANTHER[®]XT

SYNCHRONOUS DRIVE SYSTEMS



PANTHER^{XT}

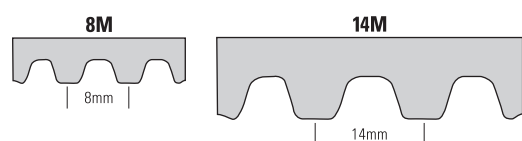
Extreme Torque Synchronous Belt

The strong, silent type, Timken Belts' Panther[®] XT belt purrs. A powerful alternative to chain or a drop-in replacement for high torque polyurethane belts,* Panther XT belts are engineered to run quietly and efficiently in the harshest environments.

Naturally agile, Panther XT belts move quickly and easily, to help achieve power ratings that meet or exceed the competition.

Carbon cord construction and abrasion-resistant, low friction tooth fabric provide strength and durability, and help reduce downtime, maintenance, and noise levels.

Panther **XT**... **PURRRFECT TIMING.**



1

Carbon Cord Construction

High modulus carbon fiber cord
Extraordinary tensile strength
Minimal stretch
Increased durability

2

Engineered Tooth Fabric

Low-friction
Abrasion resistant
Long belt life

3

Advanced Polymer Compound

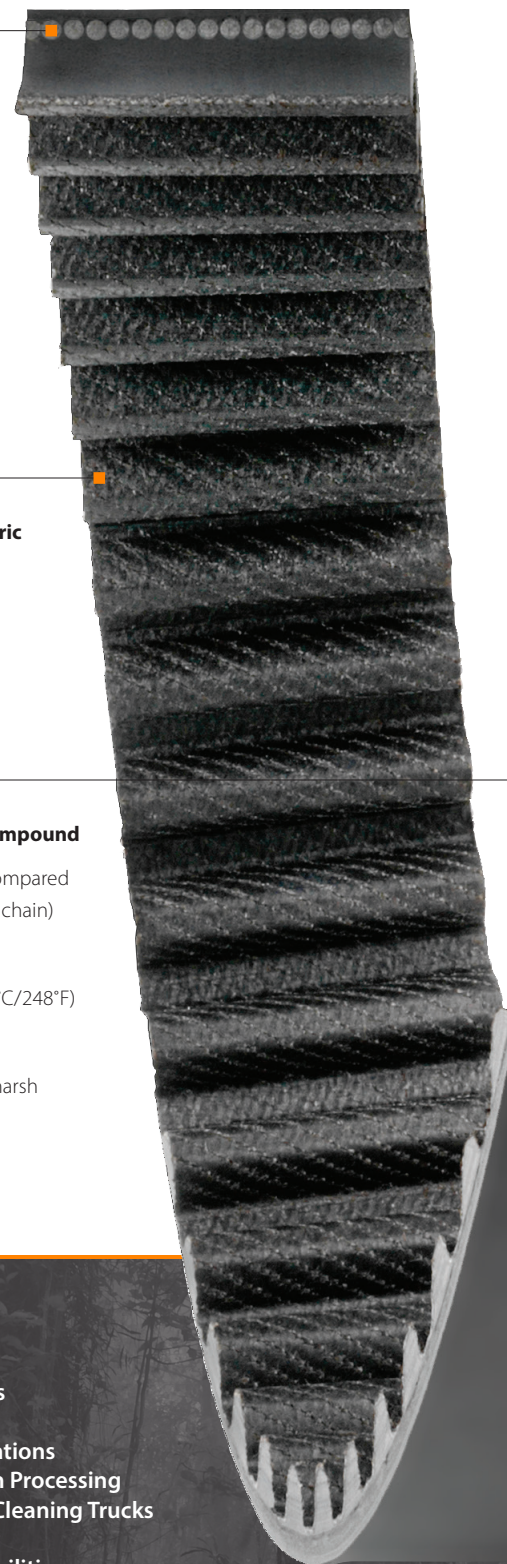
Reduced noise (when compared to polyurethane belts or chain)
High elasticity
Heat resistant (up to 120°C/248°F)
Oil resistant
Proven performance in harsh conditions

Panther **XT** Applications:

Agricultural Equipment
Centrifuges
Compressors
Conveyors
Exercise Equipment
Foil and Film Machinery
Food Packaging
Food Processing
Foundries

HVAC
Industrial Vacuum Loaders
Industrial Equipment
Industrial Machinery
Laundry Equipment
Machine Tools
Packaging Equipment
Paper Converting Equipment
Printing Machinery and Equipment

Pulp and Paper Mills
Pumps
Roller Chain Applications
Roller Mills for Grain Processing
Sewer/Catch Basin Cleaning Trucks
Textile Equipment
Waste Treatment Facilities



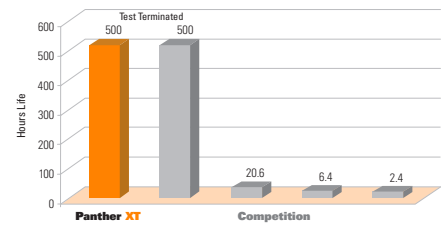
Panther **XT** belts can take the heat...**no sweat!**

Constructed with a high temperature and oil resistant polymer (up to 120°C/248°F), Panther XT belts provide high thermal stability and excellent overall chemical resistance. Carbon fiber cord resists stretch and maintains outstanding belt tension stability over the life of the belt.

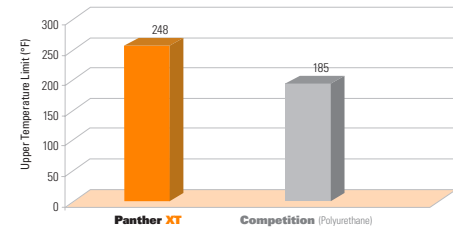
Panther **XT** high torque synchronous belts easily outlive most competition... by **nine lives!**

In life tests against competitive belts, Panther XT belts outlived most competitors, some by more than nine times, or >95%.

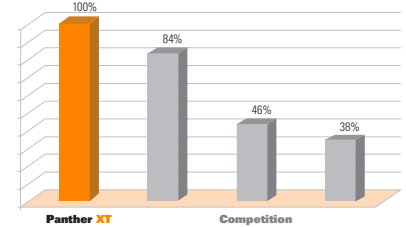
PANTHER XT Belt Life Comparison



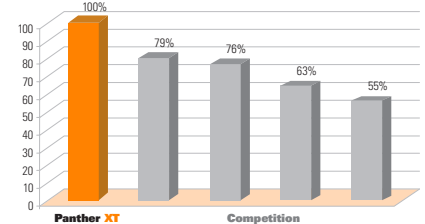
PANTHER XT Maximum Operating Temperature



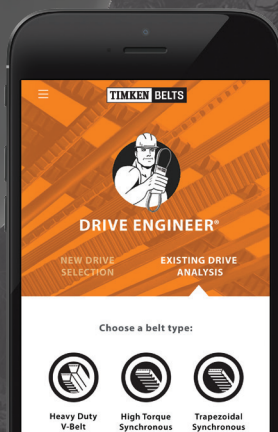
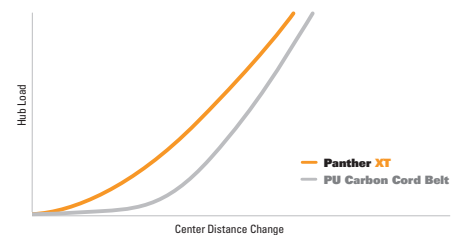
PANTHER XT Tooth Shear Strength Comparison



PANTHER XT Belt Break Strength Comparison



PANTHER XT Belt Tensile Modulus Comparison



Facilitate both new drive selection and existing drive analysis with Drive Engineer®, the robust mobile web application from Timken Belts.

Now incorporating a complete offering of Martin® synchronous sprockets and sheaves.

Visit www.driveengineer.com.

TIMKEN BELTS

Panther XT Synchronous Belt Part Numbers

8MXT Part Numbers (8mm Pitch)	Number Of Teeth	Pitch Length		Top Width (mm)
		(mm)	(in)	
*Recommended Pulleys: Martin® MPC® Sprockets – MPB, Taper Bushed (8mm), also compatible with Gates® Poly Chain® GT®2 Sprockets¹				
8MXT-640	80	640	25.2	12, 21, 36, 62
8MXT-720	90	720	28.3	12, 21, 36, 62
8MXT-800	100	800	31.5	12, 21, 36, 62
8MXT-896	112	896	35.3	12, 21, 36, 62
8MXT-960	120	960	37.8	12, 21, 36, 62
8MXT-1000	125	1000	39.4	12, 21, 36, 62
8MXT-1040	130	1040	40.9	12, 21, 36, 62
8MXT-1120	140	1120	44.1	12, 21, 36, 62
8MXT-1200	150	1200	47.2	12, 21, 36, 62
8MXT-1224	153	1224	48.2	12, 21, 36, 62
8MXT-1280	160	1280	50.4	12, 21, 36, 62
8MXT-1440	180	1440	56.7	12, 21, 36, 62
8MXT-1600	200	1600	63.0	12, 21, 36, 62
8MXT-1760	220	1760	69.3	12, 21, 36, 62
8MXT-1792	224	1792	70.6	12, 21, 36, 62
8MXT-2000	250	2000	78.7	12, 21, 36, 62
8MXT-2200	275	2200	86.6	12, 21, 36, 62
8MXT-2240	280	2240	88.2	12, 21, 36, 62
8MXT-2400	300	2400	94.5	12, 21, 36, 62
8MXT-2520	315	2520	99.2	12, 21, 36, 62
8MXT-2600	325	2600	102.4	12, 21, 36, 62
8MXT-2800	350	2800	110.2	12, 21, 36, 62
8MXT-2840	355	2840	111.8	12, 21, 36, 62
8MXT-3048	381	3048	120.0	12, 21, 36, 62
8MXT-3200	400	3200	126.0	12, 21, 36, 62
8MXT-3280	410	3280	129.1	12, 21, 36, 62
8MXT-3600	450	3600	141.7	12, 21, 36, 62
8MXT-4000	500	4000	157.5	12, 21, 36, 62
8MXT-4400	550	4400	173.2	12, 21, 36, 62
8MXT-4480	560	4480	176.4	12, 21, 36, 62

Part Number Example:

14M **XT** - **1400** - **37**
 Tooth Panther XT Pitch Length Width
 Pitch Construction (millimeters) (millimeters)

14MXT Part Numbers (14mm Pitch)	Number Of Teeth	Pitch Length		Top Width (mm)
		(mm)	(in)	
*Recommended Pulleys: Martin® MPC® Sprockets – MPB, Taper Bushed (8mm), also compatible with Gates® Poly Chain® GT®2 Sprockets¹				
14MXT-994	71	994	39.1	20, 37, 68, 90, 125
14MXT-1120	80	1120	44.1	20, 37, 68, 90, 125
14MXT-1190	85	1190	46.9	20, 37, 68, 90, 125
14MXT-1260	90	1260	49.6	20, 37, 68, 90, 125
14MXT-1400	100	1400	55.1	20, 37, 68, 90, 125
14MXT-1568	112	1568	61.7	20, 37, 68, 90, 125
14MXT-1610	115	1610	63.4	20, 37, 68, 90, 125
14MXT-1750	125	1750	68.9	20, 37, 68, 90, 125
14MXT-1890	135	1890	74.4	20, 37, 68, 90, 125
14MXT-1960	140	1960	77.2	20, 37, 68, 90, 125
14MXT-2100	150	2100	82.7	20, 37, 68, 90, 125
14MXT-2240	160	2240	88.2	20, 37, 68, 90, 125
14MXT-2310	165	2310	90.9	20, 37, 68, 90, 125
14MXT-2380	170	2380	93.7	20, 37, 68, 90, 125
14MXT-2450	175	2450	96.5	20, 37, 68, 90, 125
14MXT-2520	180	2520	99.2	20, 37, 68, 90, 125
14MXT-2590	185	2590	102.0	20, 37, 68, 90, 125
14MXT-2660	190	2660	104.7	20, 37, 68, 90, 125
14MXT-2800	200	2800	110.2	20, 37, 68, 90, 125
14MXT-3136	224	3136	123.5	20, 37, 68, 90, 125
14MXT-3304	236	3304	130.1	20, 37, 68, 90, 125
14MXT-3360	240	3360	132.3	20, 37, 68, 90, 125
14MXT-3500	250	3500	137.8	20, 37, 68, 90, 125
14MXT-3850	275	3850	151.6	20, 37, 68, 90, 125
14MXT-3920	280	3920	154.3	20, 37, 68, 90, 125
14MXT-4144	296	4144	163.2	20, 37, 68, 90, 125
14MXT-4326	309	4326	170.3	20, 37, 68, 90, 125
14MXT-4410	315	4410	173.6	20, 37, 68, 90, 125

*Timken Belts recommends Martin® MPC® Sprockets – MPB or Taper Bushed (8mm, 14mm). Panther XT belts are also compatible with Gates® Poly Chain® GT®2 sprockets. The Panther XT synchronous belt is an extreme torque product that is not for use in standard high torque sprockets such as HTD, HTS or RPP. **Caution: Use of sprockets other than MPC® sprockets or Poly Chain® GT®2 sprockets with Panther XT belts could result in mechanical failure of bushings, sprockets, bearings or shafts, possibly resulting in physical injury.** Martin®, HTS® and MPC® are registered trademarks of Martin Sprocket & Gear, Inc. Gates®, Poly Chain®, GT®, and HTD® are registered trademarks of Gates Corporation. RPP® is a registered trademark of Timken Belts.

09-21 Order No. 10881 | Timken®, Panther® and Drive Engineer® are registered trademarks of The Timken Company or its affiliates. | © 2021 The Timken Company | Printed in U.S.A.

TIMKEN BELTS

Timken Belts is part of The Timken Company's growing portfolio of engineered bearings and power transmission products. A manufacturer of premium performance power transmission belts, Timken Belts' associates and products help keep industry in motion and the world more productive.

Performance Driven. **Performance Proven.**

www.timkenbelts.com/PantherXT