



TIMKEN SUPER POWER-WEDGE® POWERS CHEMICAL CENTRIFUGES

CHALLENGE ▼

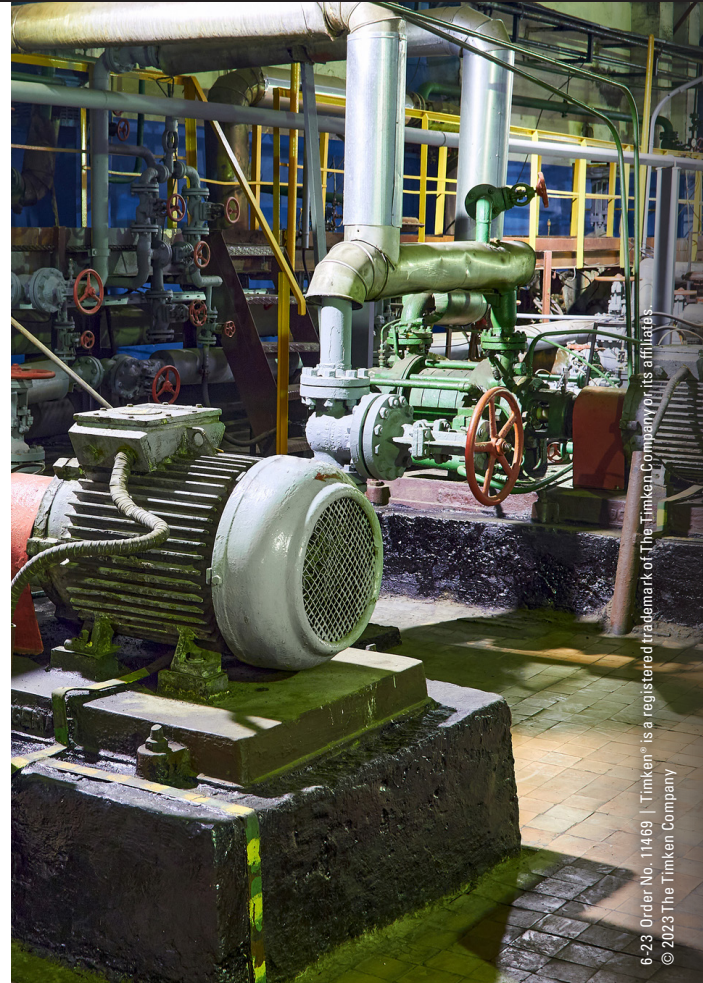
A chemical company needed to replace the belts on their 250 horsepower centrifuges. Their belt supplier had a 40-week lead time. If the chemical company waited the 40 weeks to receive new belts, it would cost them \$12,000 per hour. They needed to find another high-quality belt source – and fast.

TIMKEN BELTS SOLUTION ▼

Timken Belts paid a visit to the chemical company to review the application. Using Timken Belts’ Drive Engineer® mobile web app, onsite experts were able to analyze the existing drive and recommend the Timken® Super Power-Wedge® Band to be used on the centrifuges. Ideally suited for increased horsepower capacity, this banded belt is oil and heat resistant, static dissipating, and minimizes belt whip or turnover on the drive. With a six-week lead time, Timken Belts was able to offer the customer a timely solution and a premium belt.

RESULTS THAT MATTER ▼

After switching to the Super Power-Wedge Band, the chemical company compared the new belts with the competitors’. They noticed that the Super Power-Wedge Band was much easier to install as they are more flexible. The belts continue to last longer, therefore the customer has fewer replacement costs.



6-23 Order No. 11469 | Timken® is a registered trademark of The Timken Company or its affiliates. © 2023 The Timken Company



Timken® belts are part of The Timken Company's growing portfolio of engineered bearings and power transmission products. Timken Belts manufactures premium-performance power transmission belts that help keep industry in motion and the world more productive.

Performance Driven. **Performance Proven.**

www.timkenbelts.com