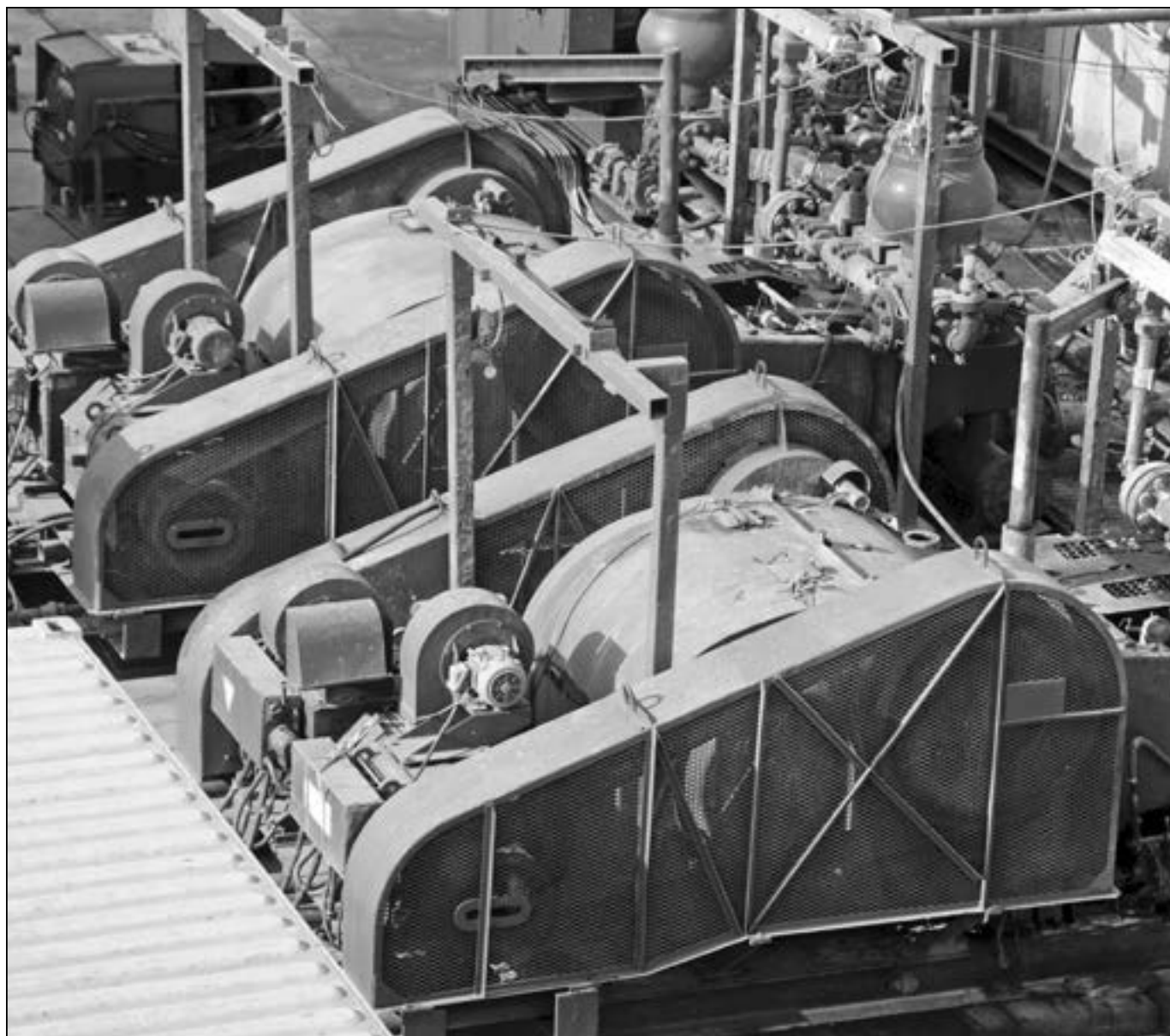
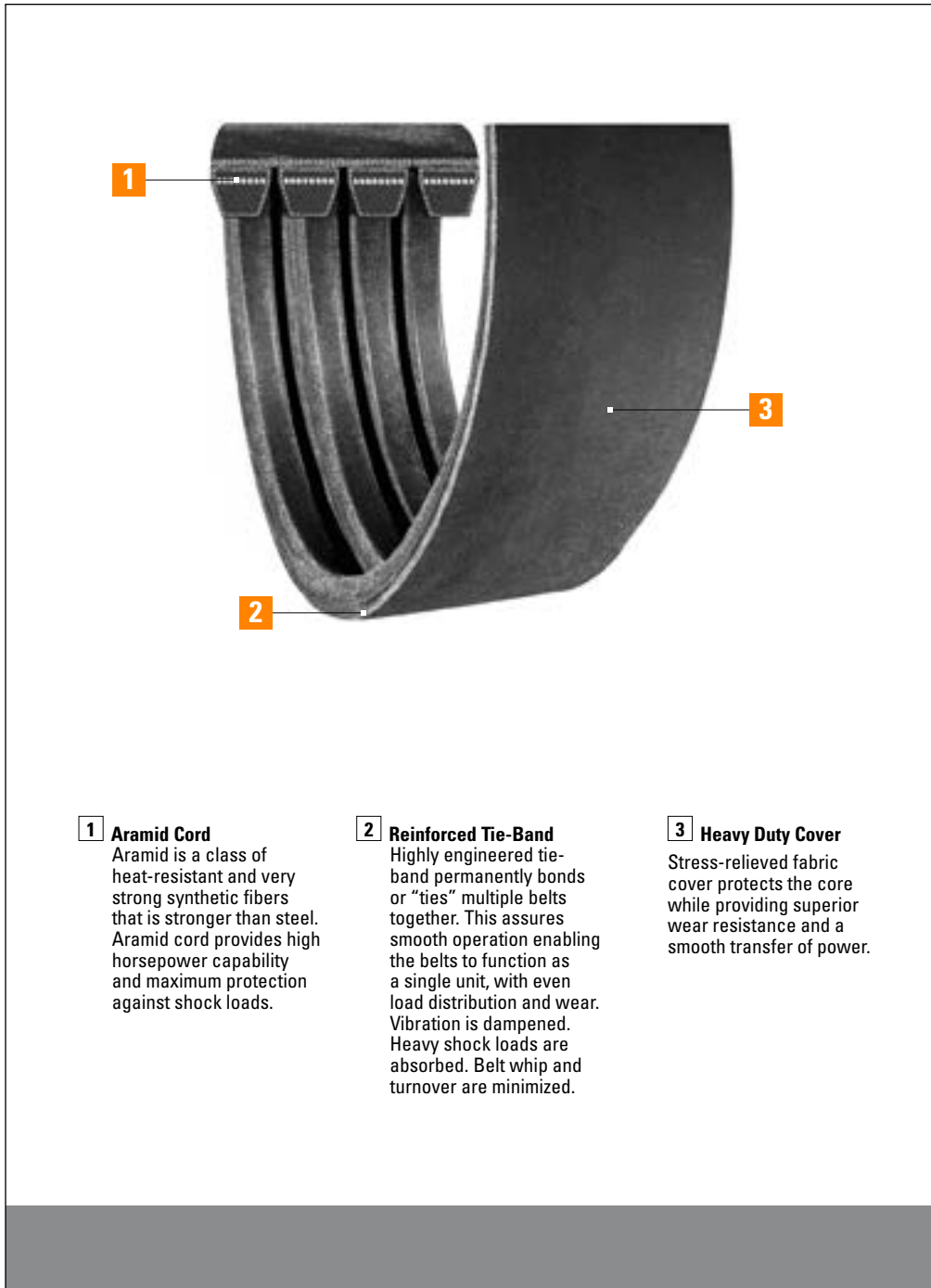


Aramax[®] Super Power-Wedge[®] Band Banded Belt



Aramax[®] Super Power-Wedge[®] Band

Banded Belt



1 Aramid Cord
Aramid is a class of heat-resistant and very strong synthetic fibers that is stronger than steel. Aramid cord provides high horsepower capability and maximum protection against shock loads.

2 Reinforced Tie-Band
Highly engineered tie-band permanently bonds or “ties” multiple belts together. This assures smooth operation enabling the belts to function as a single unit, with even load distribution and wear. Vibration is dampened. Heavy shock loads are absorbed. Belt whip and turnover are minimized.

3 Heavy Duty Cover
Stress-relieved fabric cover protects the core while providing superior wear resistance and a smooth transfer of power.

Super high performance banded belt

Tough aramid cord construction

High horsepower capability

Maximum protection against shock loads

Highly engineered tie-band

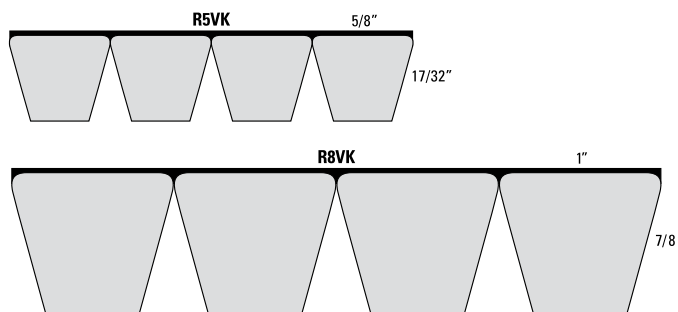
Excels in harsh oil field and industrial applications

Applications:

- Oil field mud pumps
- Lumber industry drives
- Heavy construction machinery
- & More

Aramax® Super Power-Wedge® Band

Banded Belt



Aramax® Super Power-Wedge® Band belts are designed for extraordinary strength on the toughest drives.

Aramax® Super Power-Wedge® Band belts are ideally suited for oil field equipment, rock and quarry applications, forestry industry applications and heavy construction machinery. Aramid cord provides maximum protection against belt breakage due to shock loads.

The horsepower capacity per rib is significantly higher and provides substantial cost savings in belts and metal. Overhung load is also reduced and extends equipment service life when compared with 5V and 8V belts.

Because of the high horsepower loads involved, standard 5V and 8V cast iron Q-D® pulleys typically DO NOT have sufficient horsepower capacity to operate with the Aramax Super Power-Wedge Band at the belt's rated horsepower. As a result, special pulleys are frequently required as well.

Due to the unique nature of these "super high performance" banded belts, no drive design literature is available.

Use Drive Engineer to run an existing drive analysis. When designing a new drive, we suggest working with a Timken Belts application engineer.

Note: R5VK has a brown clutching cover and is not static dissipating. R8VK has a black cover and is static dissipating.

When these R5VK and R8VK belts are used as a matched set, all belts in the set must have the same sag number. These high modulus aramid cord belts require closer matching than standard R5V and R8V belts in order to tension properly as a set.

Maximum number of ribs available is 12.

Q-D® is a registered trademark of Regal Beloit America, Inc.

Aramax® Super Power-Wedge® Band Part Numbers

Part Number	Outside Circumference (inches)	Outside Circumference (mm)	Weight per Rib (lbs.)
R5VK Cross Section			
R5VK600	61.1	1552	1.6
R5VK630	64.1	1628	1.7
R5VK670	68.1	1730	1.8
R5VK710	72.1	1831	1.9
R5VK730	74.1	1882	1.9
R5VK750	76.1	1933	2.0
R5VK800	81.1	2060	11.5
R5VK850	86.1	2187	2.3
R5VK870	88.1	2238	2.3
R5VK900	91.1	2314	2.4
R5VK950	96.1	2441	2.5
R5VK1000	101.1	2568	2.6
R5VK1060	107.1	2720	2.8
R5VK1120	113.1	2873	2.9
R5VK1180	119.1	3025	3.1
R5VK1250	126.1	3203	3.3
R5VK1320	133.1	3381	3.5
R5VK1400	141.1	3584	15.3
R5VK1500	151.1	3838	6.2
R5VK1600	161.1	4092	4.2
R5VK1700	171.1	4346	4.4
R5VK1800	181.1	4600	4.7
R5VK1900	191.1	4854	5.0
R5VK2000	201.1	5108	12.9
R5VK2120	213.1	5413	5.5
R5VK2240	225.1	5718	5.9
R5VK2360	237.1	6022	6.2
R5VK2500	251.1	6378	6.5
R5VK2650	266.1	6759	7.3
R5VK2800	281.1	7140	7.3
R5VK3000	301.1	7648	7.8
R5VK3150	316.1	8029	8.2
R5VK3350	336.1	8537	8.8
R5VK3550	336.1	8537	18.4

Aramax[®] Super Power-Wedge[®] Band

Banded Belt

Part Number Example: **R8VK1500-4** =

R **8V** **K** **1500** **4**
 Banded Cross Aramid Cord Effective Length Number
 Construction Section Construction (inches in tenths: 150.0) of Ribs

Part Number	Outside Circumference (inches)	Outside Circumference (mm)	Weight per Rib (lbs.)
R8VK Cross Section			
R8VK1500	151.5	3848	21.4
R8VK1600	161.5	4102	22.9
R8VK1700	171.5	4356	24.3
R8VK1800	181.5	4610	12.9
R8VK1900	191.5	4864	13.6
R8VK2000	201.5	5118	21.5
R8VK2120	213.5	5423	22.8
R8VK2160	217.5	5525	32.1
R8VK2240	225.5	5728	21.1
R8VK2360	237.5	6033	25.4
R8VK2500	251.5	6388	35.9
R8VK2600	261.5	6642	36.1
R8VK2650	266.5	6769	28.6
R8VK2780	279.5	7099	137.9
R8VK2800	281.5	7150	30.2
R8VK3000	301.5	7658	32.3
R8VK3150	316.5	8039	45.3
R8VK3350	336.5	8547	36.1
R8VK3550	356.5	9055	38.3
R8VK3750	376.5	9563	40.5
R8VK4000	401.1	10188	57.1
R8VK4250	426.1	10823	59.9
R8VK4500	451.1	11458	62.7
R8VK4750	476.1	12093	65.5
R8VK5000	501.1	12728	68.3
R8VK5600	561.1	14252	76.7

For complete part number, add the number of ribs required.

