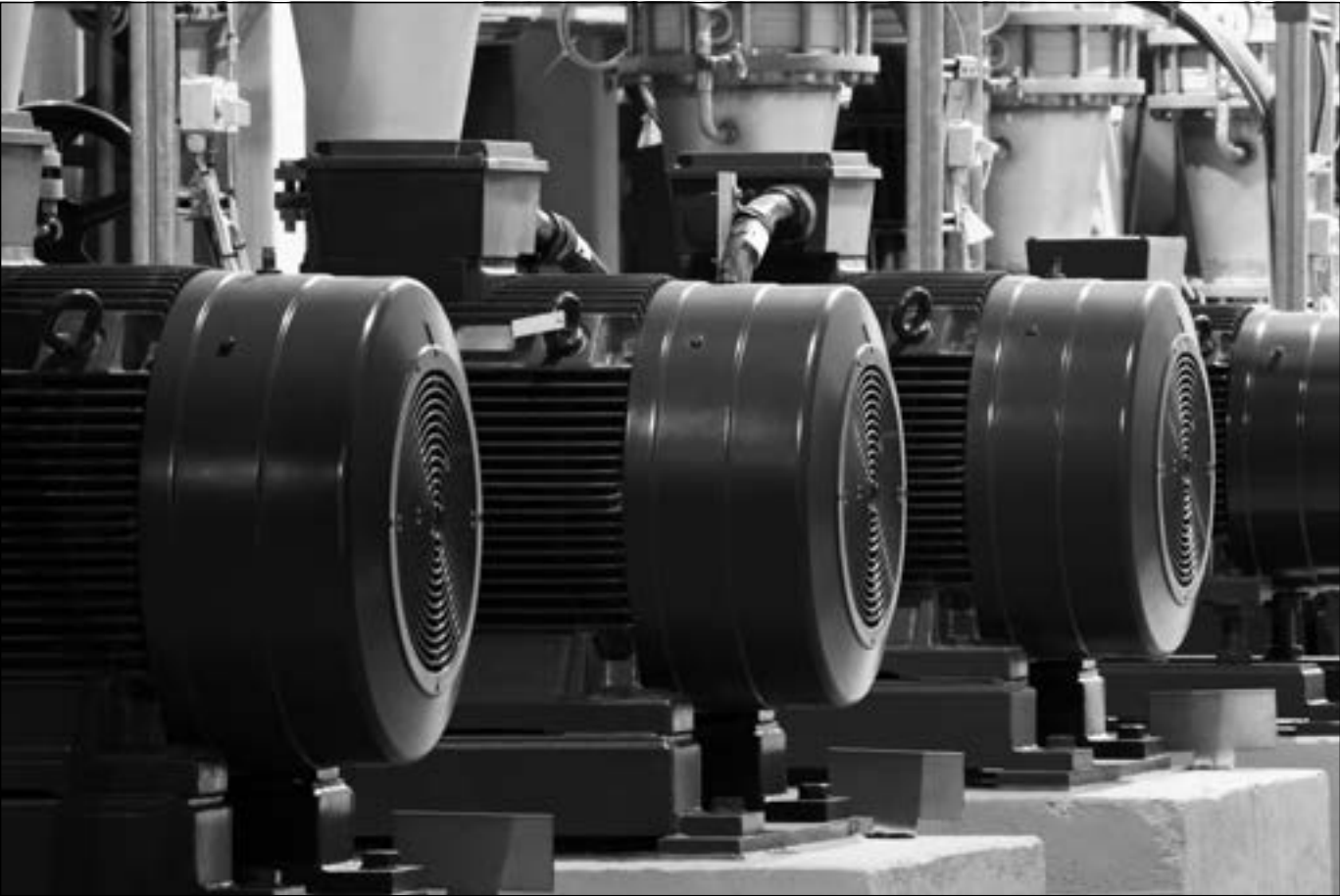


# Gold-Ribbon® Cog-Band®

Banded Belt



# Gold-Ribbon® Cog-Band® Banded Belt



**1 Oversized Polyester Cord**  
High-modulus cord carries the horsepower load with minimum stretch. Specially treated to produce a long-lasting bond with the surrounding rubber assuring longer belt life. Adds belt strength and stability during peak shock loads.

**2 Precision Molded Cogs**  
Superior flexibility with reduced bending stress helps dissipate heat providing significantly longer belt life. Allows use of smaller pulley diameters. A cost and space saver.

**3 Raw Edge Sidewalls**  
Produces a higher coefficient of friction and minimizes slippage. The gripping power provides higher energy efficiency and reduces vibration for extended component life.

**4 EPDM**  
Ethylene Propylene Diene Monomer (EPDM) is a synthetic rubber that is durable and resistant to heat, oil, hardening and glazing. EPDM has superior flex and load carrying capacity with a broad operating temperature range of -50°F to +250°F.

**5 Reinforced Tie-Band**  
Highly engineered tie-band permanently bonds or “ties” multiple belts together. This assures smooth operation enabling the belts to function as a single unit, with even load distribution and wear. Vibration is dampened. Heavy shock loads are absorbed. Belt whip and turnover are minimized.

**Recommended Pulleys:**  
Conventional – OD, Taper Bushed, or MST (A-B, C, D)

Banded version of Gold-Ribbon Cog-Belt

Minimizes belt whip and turnover

EPDM raw edge construction

Long belt life

High horsepower

Static dissipating

Applications:

- Blowers
- Fans
- Pumps
- & More

Synchronous Belts

V-Belts

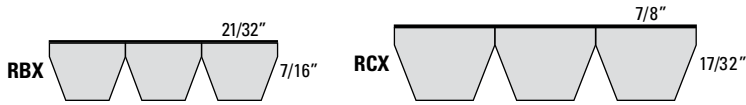
Specialty Belts

Tools

General Information

# Gold-Ribbon® Cog-Band®

## Banded Belt



**Two or more Gold-Ribbon Cog-Belts are permanently joined together at the top with a reinforced tie-band. Ideally suited for pulsating or heavily shock loaded drives and drives with long center distances to minimize belt whip and rollover.**

This banded version of “The Energy Saver” combines the longer life and superior performance of the Gold-Ribbon® Cog-Belt® with the stability of a banded belt.

The unique construction features Ethylene Propylene Diene Monomer (EPDM), with the superior flexing of precision molded cogs and the tenacious gripping power of raw edge sidewalls to provide significantly longer belt life, improved efficiency and higher horsepower ratings.

EPDM is static conductive, durable, and resistant to heat, hardening, and glazing.

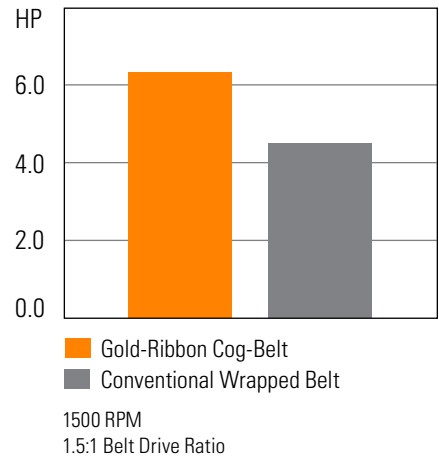
Banded belts assure that each rib is sharing the load equally to achieve the full horsepower capacity of the drive. The reinforced band across the top greatly enhances stability by minimizing belt whip and turnover.

For complete part number, add the number of ribs required For example: RBX100-3.

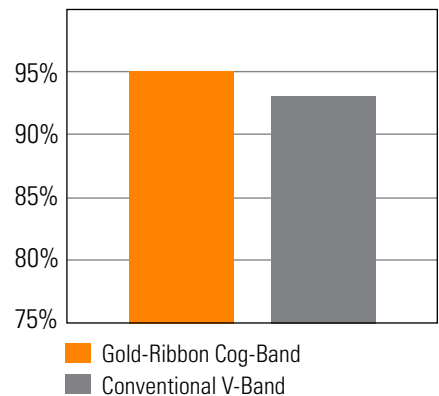


Product Type and Length Code	Match Limit
<b>Gold-Ribbon® Cog-Band®</b>	
RBX51 – RBX61	1
RBX62 – RBX144	2
RBX158 and longer	3
RCX68 – RCX144	2
RCX158 and longer	3
RDX120 – RDX144	2
RDX158 and longer	3

### Horsepower Rating Comparison



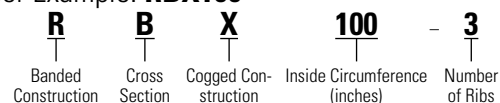
### Energy Efficiency Comparison



# Gold-Ribbon® Cog-Band® Banded Belts

## Gold-Ribbon® Cog-Band® Part Numbers

Part Number Example: **RBX100 =**



Part Number	Outside Circumference (inches)	Outside Circumference (mm)	Weight per Rib (lbs.)
<b>RBX – Banded BX Section; Recommended Pulleys: Conventional – QD, Taper Bushed, or MST (A-B)</b>			
RBX37	41	1041	0.9
RBX51	55	1397	1.3
RBX53	57	1448	1.3
RBX55	59	1499	1.4
RBX56	60	1524	1.4
RBX58	62	1575	1.4
RBX59	63	1600	1.4
RBX60	64	1626	1.5
RBX61	65	1651	1.5
RBX62	66	1676	1.5
RBX63	67	1702	1.5
RBX64	68	1727	1.6
RBX65	69	1753	1.6
RBX66	70	1778	1.6
RBX67	71	1803	1.6
RBX68	72	1829	1.7
RBX70	74	1880	1.7
RBX71	75	1905	1.7
RBX73	77	1956	1.8
RBX75	79	2007	1.8
RBX77	81	2057	1.9
RBX78	82	2083	1.9
RBX79	83	2108	1.9
RBX80	84	2134	2.0
RBX81	85	2159	2.0
RBX83	87	2210	2.0
RBX85	89	2261	2.1
RBX90	94	2388	2.2
RBX93	97	2464	2.3
RBX95	99	2515	2.3
RBX97	101	2565	2.4
RBX100	104	2642	2.4

Part Number	Outside Circumference (inches)	Outside Circumference (mm)	Weight per Rib (lbs.)
<b>RBX – Banded BX Section; Recommended Pulleys: Conventional – QD, Taper Bushed, or MST (A-B)</b>			
RBX102	106	2692	2.5
RBX103	107	2718	2.5
RBX105	109	2769	2.6
RBX108	112	2845	2.6
RBX110	114	2896	4.0
RBX112	116	2946	2.7
RBX116	120	3048	2.8
RBX120	124	3150	2.9
RBX128	132	3353	3.1
RBX136	140	3556	3.3
RBX144	148	3759	3.5
RBX158	161.3	4097	3.8
RBX160	163.3	4148	3.9
RBX173	176.3	4478	4.2
RBX180	183.3	4656	4.4
RBX195	198.3	5037	4.7
<b>RCX – Banded CX Section Recommended Pulleys: Conventional – QD, Taper Bushed, or MST (C)</b>			
RCX68	73.3	1862	2.8
RCX75	80.3	2040	3.0
RCX78	83.3	2116	3.1
RCX81	86.3	2192	3.3
RCX85	90.3	2294	3.4
RCX90	94.9	2411	3.6
RCX96	100.9	2563	3.8
RCX105	109.9	2792	4.2
RCX112	116.9	2969	4.5
RCX120	124.9	3173	4.8
RCX128	132.9	3376	5.1
RCX131	135.9	3452	5.2
RCX136	140.9	3579	5.4
RCX137	141.9	3604	5.5

# Gold-Ribbon® Cog-Band®

## Banded Belts

### Gold-Ribbon® Cog-Band® Part Numbers

Part Number	Outside Circumference (inches)	Outside Circumference (mm)	Weight per Rib (lbs.)
<b>RCX – Banded CX Section Recommended Pulleys: Conventional – OD, Taper Bushed, or MST (C)</b>			
RCX144	148.9	3782	5.7
RCX158	162.9	4138	6.3
RCX162	166.9	4239	6.5
RCX173	177.9	4519	6.9
RCX180	184.9	4697	7.2
RCX190	194.9	4951	7.6
RCX195	199.9	5078	7.8

